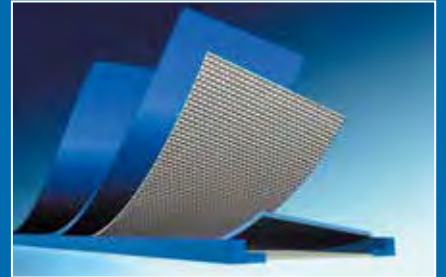


Standard Fabrications

- Amseal™ sealed belt edges
- Cleated belts and Sidewalls
- Guides/Ropes



Splice Type & Application Matrix

1	Very suitable
2	Less suitable
3	Not suitable

Use the matrix below to select splice for your application/belt type:

Application/ Belt type	Splice Type															
	F Splice (80x12)	F Splice (80x20)	F Splice (50x20)	F Splice 72° (80x12)	F Splice 72° (80x20)	F Splice 72° (50x20)	FOF Splice (50x20)	FOF Splice 72° (50x20)	Step Splice 1-ply 90°	Step Splice 1-ply 72°	Step Splice 2-ply 90°	Step Splice 3-ply 90°	Step Splice 2-ply 72°	Step Splice 3-ply 72°	Step/Finger Splice	Skived Splice
Hard belt material	1	1	1	1	1	1	2	2	3	3	3	3	3	3	3	1
Soft belt material	3	3	3	3	3	3	2	2	1	1	1	1	1	1	1	3
1-ply belts	1	1	1	1	1	1	3	3	3	3	3	3	3	3	3	3
2-ply PU belts	1	1	1	1	1	1	2	2	3	2	3	3	2	3	2	3
2-ply PVC belts	2	2	2	2	2	2	1	1	3	2	3	3	2	3	2	2
3-ply belts	3	3	3	3	3	3	3	3	3	3	1	3	3	1	2	2
Crowned pulley (>1%)	3	3	3	3	3	3	1	1	2	2	2	1	1	1	1	1
Knife edge	1	3	3	1	3	3	1	1	3	3	3	3	3	3	3	3
Pollution	3	3	3	3	3	3	1	1	1	1	1	1	1	1	1	2
Lateral stability required	3	3	3	3	3	3	1	1	1	1	1	1	1	1	1	1
Two running directions	1	1	1	1	1	1	1	1	3	3	3	3	3	3	3	3
Scraper	1	1	1	1	1	1	1	1	2	2	2	2	2	2	2	3
Backflexing (small pulley diameters)	1	1	1	1	1	1	2	2	3	3	3	3	3	3	2	3
High temperature	3	3	3	3	3	3	1	1	1	1	1	1	1	1	1	1
High tensioning & small pulley diameters	1	3	3	1	3	3	3	3	3	3	3	3	3	3	3	3
Bagel belts	3	3	3	3	3	3	2	2	3	1	1	3	1	1	1	1

Standard Splices

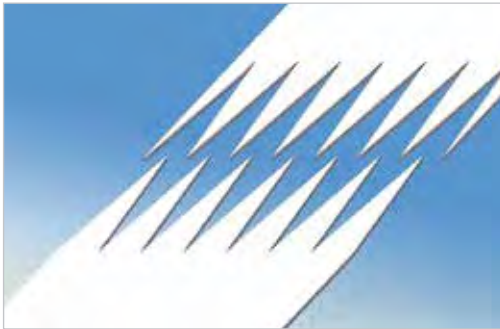
Finger Splice



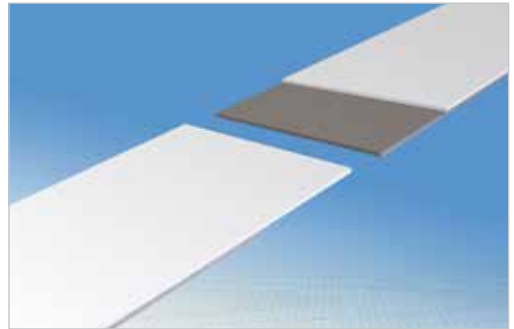
Step Finger Splice



Finger Splice 72°



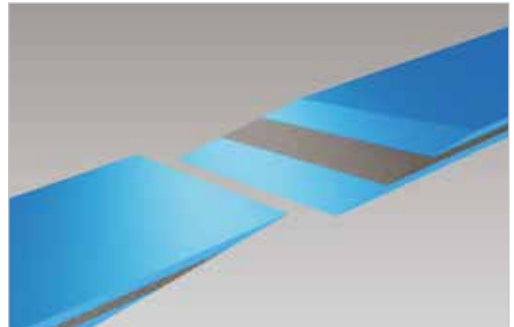
Step Splice Endless



FOF Splice



Skive Laps Prepared



FOF Splice 72°



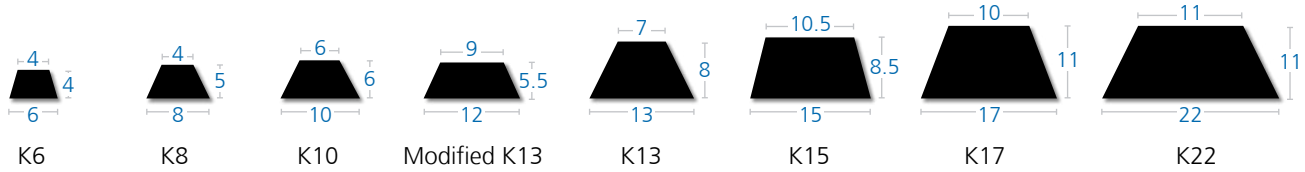
Longitudinal Splice



Standard Cleats & V-Guides

PVC and PU - Profiles for Cleats or Guides

Dimensions are in millimeters unless otherwise indicated. Contact us for additional sizes and color availability.



Minimum Pulley Diameter PVC [PU] When used as Cleats

1" [1.75"]	2" [2.5"]	2.5" [3.5"]	3" [NA]	3" [4.5"]	3.5" [4.5"]	4.5" [5.5"]	6" [NA]
------------	-----------	-------------	---------	-----------	-------------	-------------	---------

When used as **Guides PVC (PU)** Note: For notched guides, reduce min. pulley diameter by 30%. For guides subject to reverse bending, or mounted on the top surface of the belt, increase the min. pulley diameter by 45%.

1.5" [2.5"]	2" [3.5"]	2.75" [4"]	3.5" [NA]	3.5" [5.5"]	4" [7"]	5" [8"]	6" [NA]
-------------	-----------	------------	-----------	-------------	---------	---------	---------

Standard PVC Color/Style Availability: G (dark green), W (white), N (notched style)

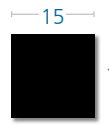
W	G·GN·W·WN	G·GN·W·WN	W·B	G·GN·W·WN	WN	G·W·WN	WN
---	-----------	-----------	-----	-----------	----	--------	----

Standard PU Color/Style Availability: T (transparent), W (white), N (notched style), NA (not available)

W·WN	W	T·TN·W·WN	NA	T·TN·W·WN	W	TN·W	NA
------	---	-----------	----	-----------	---	------	----

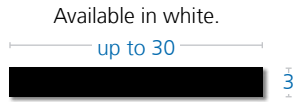
PVC - Specialty Profiles

Dimensions are in millimeters unless otherwise indicated.



PVC Rope

Available in white. (profile can be cut down to various dimensions)



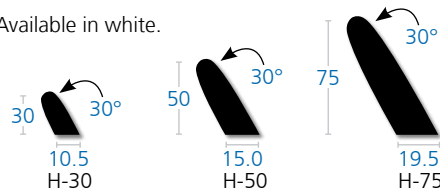
ES

Available in white.

up to 30

PVC - Angle Footless Cleats

Available in white.

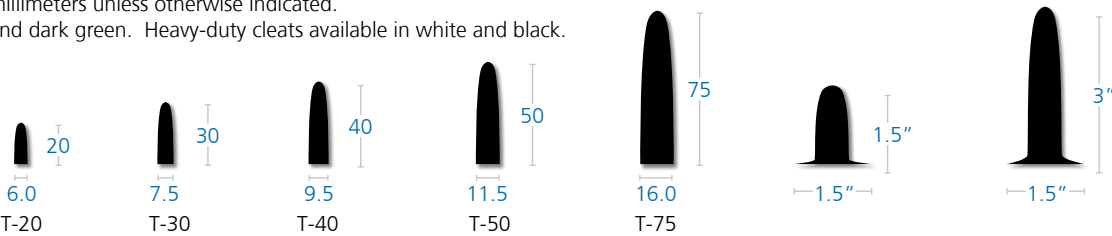


Minimum Pulley Diameter

7" (used as cleats)	3" (used as cleats/guides/edge flanges)	1.25"	2.0"	3"
12" (used as guides/edge flanges)				

PVC - Footless and Heavy-duty T-Cleats

Dimensions are in millimeters unless otherwise indicated. Available in white and dark green. Heavy-duty cleats available in white and black.



Minimum Pulley Diameter

1"	1.25"	1.5"	2"	3"	6"	10"
					Heavy-Duty	Heavy-Duty

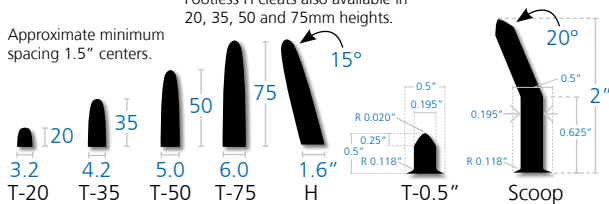
PU - Footless T and H, T and Scoop Cleats

Dimensions are in millimeters unless otherwise indicated.

Available in white.

Footless H cleats also available in 20, 35, 50 and 75mm heights.

Approximate minimum spacing 1.5" centers.

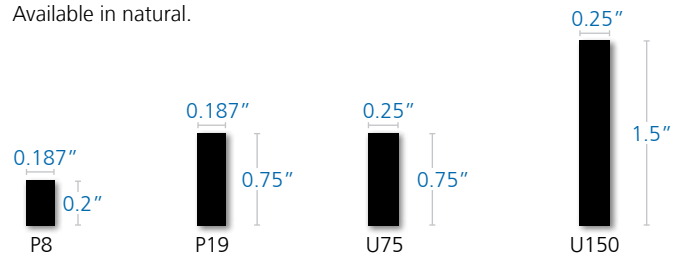


Minimum Pulley Diameter

T/H-20 (1")	T/H-35 (1.5")	T/H-50 (2")	T/H-75 (2.5")	1.313"	1.313"	1.313"	1.313"	1.75"	1.75"
-------------	---------------	-------------	---------------	--------	--------	--------	--------	-------	-------

PU - Specialty Cleats

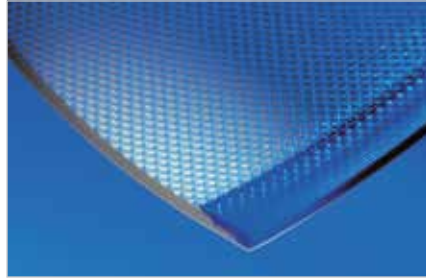
Available in natural.



Standard Fabrications

Amseal™ Sealed Edges

A wide range of standard belts can be fitted with Amseal™ edges and are available in FDA white or blue.

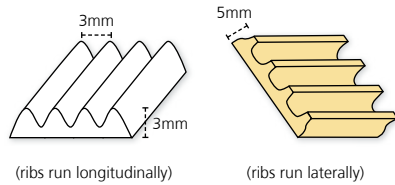


To produce Amseal™, we thermally fuse a homogeneous material to a specially prepared, stepped belt edge. This unique method leaves the entire belt cover intact and provides a robust edge much less susceptible to damage. This mechanical integrity is a main advantage over competitive products on the market.

Special Edge Guides

Special guides of various designs are available for difficult application demands.

Multi-Rib Edge Guide Amtel/PU/PVC A11 Guide



- White
- up to 12 ribs
- min. pulley: 0.5"
- Beige
- 30, 35 and 40mm wide
- min. pulley: 2"

Corrugated Loop Profiles



Available with or without foam inserts

Depanner Belt



Standard Corrugated Sidewalls



Corrugated sidewalls are designed to allow small pulley diameters while maximizing product capacity.

PVC corrugated sidewalls can be applied to PVC styles with 0.5mm or greater cover thickness. Heights are 1" to 3" (25mm - 75mm). Minimum pulley diameter equals three times sidewall height. Available in white.

PU corrugated sidewalls can be applied to PU styles with 0.2mm or greater cover thickness. Heights are 25, 30, 35, 40, 45, 50 and 55mm. Minimum pulley diameter equals two times sidewall height. (Available in white or dark green) - Please check availability of other sizes.

Dimensions:

	Pitch	Width
PU	1.00"	0.87"
PVC	2.20"	1.89"

Mini Corrugated PU Sidewalls



When smaller minimum pulley diameters are required, mini-corrugated sidewalls are available up to 2 inches high.

Minimum Pulley Diameters/Dimensions:

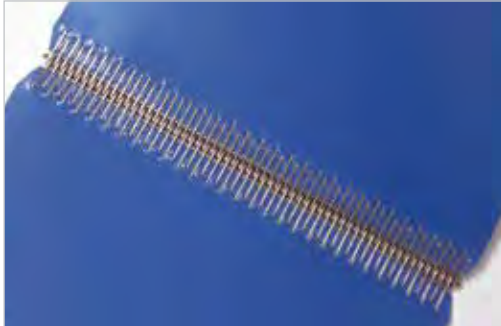
Wall Height	Minimum (std. flexing)	Minimum back-bend	Pitch	Width
1.00"	1.25"	10.00"	0.654"	1.00"
1.50"	1.25"	12.00"	0.654"	1.00"
2.00"	1.75"	14.00"	0.654"	1.00"

Note: These are minimum values. Greater diameters, where feasible, will increase the longevity of the belt in operation.

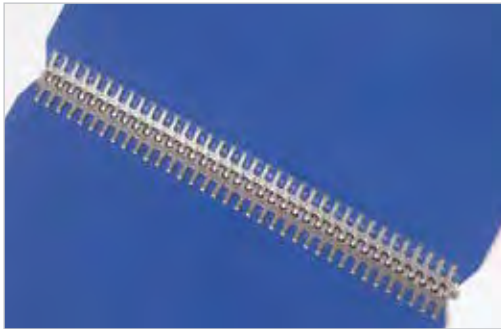
Standard Fasteners

Metal

Clipper Lace



Alligator Lace



Staple Lace

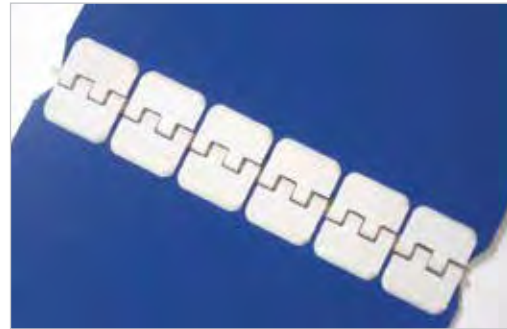


Non-metallic

Plastic Spiral Lace



Plastic Rivet Lace



MD Splice



local stock
quick belt replacement
short delivery time
24/7 service



Standard Fastener Fabrications

Get the best performance by selecting the appropriate lace style and retain the strength and durability of metal fasteners without the problems of product marking or damage.

Standard

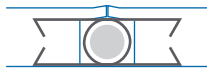


Miscellaneous types available

Contact a factory representative for assistance in your selection.

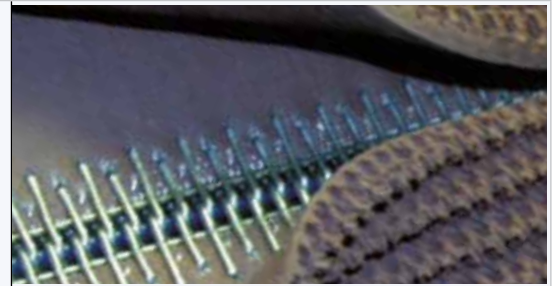


Hidden



Style #0 • Fab. code: #0

Lacing is hidden by the cover of the belt to allow the ease of installation provided by a mechanical splice with the smooth operation of an endless belt.



Hidden

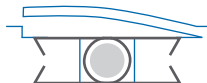


Style #1 • Fab. code: #1

Provides smooth transfer with minimal gap at lacing. Belt cover or third upper ply on three-ply types is re-applied back down over legs of the bare top lacing hooks.



Overlap

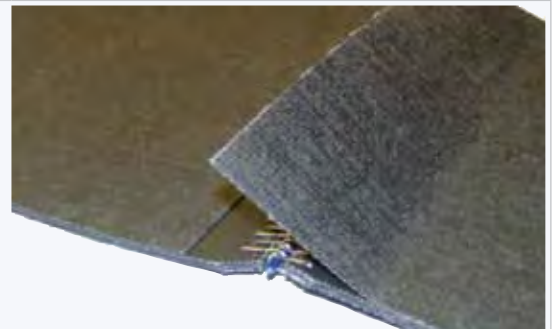


Style #2 • Fab. code: #2

Non-reinforced cover lays over lacing and may be temporarily or permanently adhered to opposite side to hide lacing.

Style #3 • Fab. code: #3

Reinforced cover adds additional strength to flap and is best when flap remains loose for repeated removal belt from conveyor for cleaning, etc...

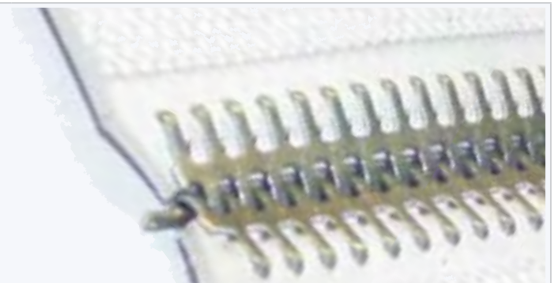


Recessed



Style #4 • Fab. code: #4

General recessed lacing placing hooks just over fabric ply.



North American Service Network

Headquarters:

Ammeraal Beltech North America
7501 N. St. Louis Avenue
Skokie, IL 60076-4033

T +1 847 673 6720
 F +1 847 673 6373
 TF +1 800 323 4170
 info@ammeraalbeltechusa.com
 www.Ammeraal-Beltechusa.com



North American Locations

Georgia

1649 Sands Place, E
 Marietta, GA 30067-8787

T +1 770 952 0336
 F +1 770 952 9697
 TF +1 800 533 3765

Texas

1014 Santerre Drive
 Grand Prairie, TX 75050-1937

T +1 972 647 8996
 F +1 972 660 2596
 TF +1 800 533 3765

W. Pennsylvania

112 Nardis Drive
 Jefferson, PA 15344-4103

T +1 724 966 5084
 F +1 724 883 2600
 TF +1 800 533 3765

E. Pennsylvania

4408A Pottsville Pike, Bldg.8
 Reading, PA 19605-1214

T +1 610 929 3713
 F +1 610 929 3715
 TF +1 800 533 3765

Michigan

1525 Gezon Parkway SW, Suite E
 Wyoming, MI 49509-9548

T +1 616 534 2495
 F +1 616 534 2498
 TF +1 866 791 0162

California

10724 Bloomfield Avenue
 Santa Fe Springs, CA 90670-3914

T +1 562 946 2700
 F +1 562 946 8506
 TF +1 866 778 9017

Rhode Island

46 Warwick Industrial Drive
 Warwick, RI 02886-2400

T +1 401 732 8131
 F +1 401 732 8137
 TF +1 800 533 3765

Oregon

765 Conger Street
 Eugene, OR 97402-0219

T +1 541 686 9554
 F +1 541 344 6837
 TF +1 866 778 9017

Washington

6841 South 220th Street, Bldg. D
 Kent, WA 98032-1921

T +1 253 872 7322
 F +1 253 872 7410
 TF +1 66 778 9017

E. Pennsylvania

500 Brentwood Drive
 Reading, PA 19611-2015

T +1 610 372 1800
 F +1 610 372 3590
 TF +1 800 937 2864

Ontario, Canada

290 Britannia Rd. E.
 Mississauga, ON L4Z 1S6

T +1 905 890 1311
 F +1 905 890 3660
 TF +1 800 455 3337

Québec, Canada

4045 Rue Grand
 Laval, QC H7L 5X5

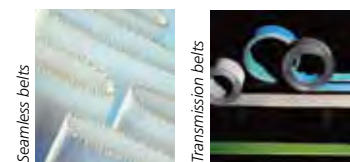
TF +1 800 455 3337

Solid advice
For all your belting needs
Local stock & service



Conveyor belts

Timing belts



Seamless belts

Transmission belts



Modular belts

Fabrication & service

... and 150 more service contacts on www.ammeraalbeltech.com