

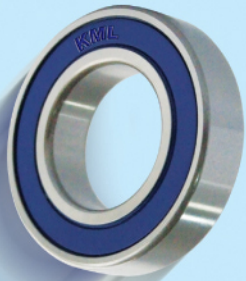


Premium Grade Ball Bearings

Premium

Simplicity in design
Consistency in performance
Value for money

KML Premium Gr



Low noise ball bearing is the most popular selection of bearing for 3-phase standard electric motors and commercial electric motors for domestic appliances because of its simple and maintenance free arrangement.

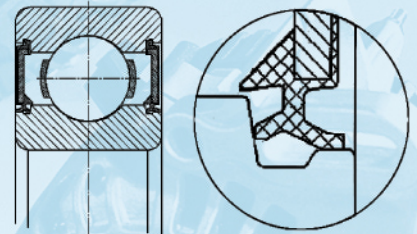
Although load at shaft end is rarely known to motor manufacturers, operational load in most cases are widely believed to be lower than the permissible load of the selected bearing. Hence, **KML** design put more emphasis to grease service life than fatigue life of electric motor bearings.

Grease

- Service life of an electric motor bearing can be understood as the grease service life as fatigue is seldom the root cause of failure
- In order to ensure that proper bearing function is sustained by the initial grease quantity in the bearing, extra attention has been paid to the selection of grease type, cleanliness, appropriate quantity & installation conditions.
- Chevron SRI # 2 grease is the standard grease of **KML** premium grade ball bearing because of its proven performance in wide temperature range (-30 / +150°C), water resistance and quiet running.
- More is not always better. Grease quantity of **KML** premium grade ball bearing is about 25% on the free internal space of a bearing.

Enclosure

- Although both shield and seal-type ball bearings are widely used by motor manufacturers, it is advisable to use full enclosure type of sealed-bearings for motor maintenance and repair purposes because of its higher effectiveness in retaining grease while excluding contaminant.
- Light contact triple lip seals are duly designed for premium grade ball bearings to tackle the combination of factors, namely low torque and good enclosure. Seal has to give due respect to low friction torque, which is the main factor accounting for the efficiency of domestic appliance electric motors. On the other hand, it has to be tight enough to eliminate grease contamination & leakage.
- The light contact triple lip seals in blue color are made of Hydrogenated Nitrile Rubber material with the operation temperature from -40°C to +150°C.



Premium Grade Ball Bearings

Our Practices

- Quiet running is achieved not only by dimensional accuracy ABEC 3, but also by a good combination of high precision steel ball, filtered grease, clearance and cleanliness of raceway.
- Premium grade ball bearings are 100% noise tested after greasing to ensure that the grease is free of contaminants that to cause premature wear.
- Tight tolerance of inner bore for better compatibility to shafts and better resultant clearance maintained after assembly.
- Internal modifications and design of **KML** bearings are fully tested and homologated by test rigs for reliable performance.

KML cares

- **KML** premium ball bearings are in compliance with RoHS directives.
- Non-toxic ink and recycle paper is used for our packaging materials.

Ex-stock availability

Regular stocks of premium grade ball bearings are kept to satisfy the customers' requirements of immediate delivery & small quantities.

The most popular items in stock including:

608-2RDQE6

6000-2RDQE6 ~ 6010-2RDQE6

6200-2RDQE6 ~ 6210-2RDQE6

6300-2RDQE6 ~ 6310-2RDQE6

608-ZZQE6

6000-ZZQE6 ~ 6010-ZZQE6

6200-ZZQE6 ~ 6210-ZZQE6

6300-ZZQE6 ~ 6310-ZZQE6





KML Bearing and Equipment Limited

(Head office)

Address: Flat 5-7, 26th Floor, Saxon Tower, 7
Cheung Shun Street, Kowloon, Hong Kong,
China

Phone: 852-2425-1661

Fax: 852-2480-5866

KML Powertrans Inc. (China)

Guangzhou, China

Address: Rm 05-06, F/17A, Bank of China
Building, 338 Qinghe Rd E., Guangzhou, China

Phone: 86-20-84698686

Fax: 86-20-84698689

Shanghai, China

Address: Room H, Floor 20, JinXuan Building,
238 Nandan Road East, Shanghai, China

Phone: 86-21-64388110

Fax: 86-21-64276197

KML PowerTech Ltd. (China)

Address: No.2 Jingliu Road, Luolong Science
and Technology District, Luoyang City, Henan
Province, China

Phone: 86-379-6861-3988

Fax: 86-379-6861-3969

KML Bearing Canada Inc. (Canada)

Mississauga, Canada

Address: 1303 Kamato Road, Mississauga
Ontario, L4W 2M2, Canada

Phone: 1-905-629-4255

Fax: 1-905-629-2358

Montreal, Canada

Address: 561 Orly Ave, Dorval, Quebec, H9P
1G1, Canada

Phone: 1-514-636-1777

Fax: 1-514-636-1519

Edmonton, Canada

Address: 4525 – 101 Street, Edmonton,
Alberta, T6E 5C6, Canada

Phone: 1-780-433-6797

Fax: 1-780-433-6157

KML Bearing USA, Inc. (USA)

Address: 213 Jones Blvd., P.O. Box 1136,
Pottstown, PA 19464, USA

Phone: 610-495-6134, 877-495-6134 (toll
free)

Fax: 610-495-6183

E-mail: info@kml-bearing.com [Http://www.kml-bearing.com](http://www.kml-bearing.com)